

1. Using Windows Explorer, navigate to C:\PROGRAM FILES\TRACK MASTER and delete the TRACK MASTER.EXE and COMMAND LINK .EXE files
2. Install TM 2000

Configuring Your PC for Memory Cards

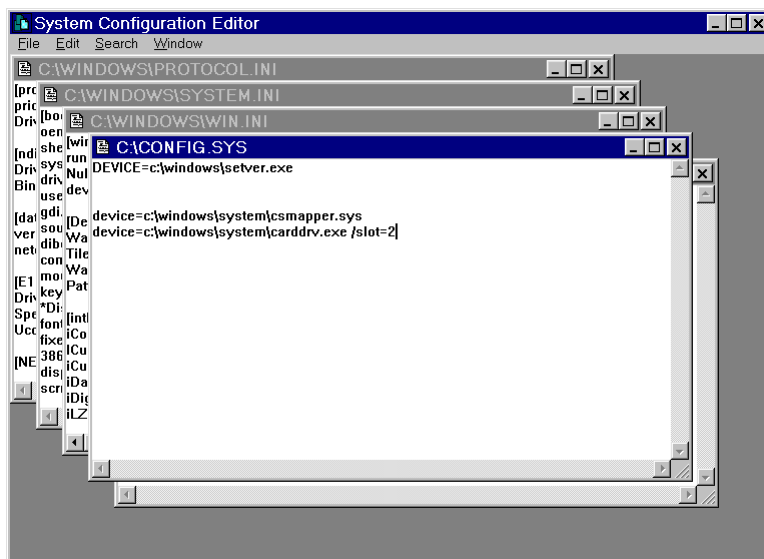
Many Commander II systems include the *removable memory card* option. IF your system has this option then you need to follow the instructions in this section.

CDS memory cards must be recognized as *removable drives* by the operating system in order to work properly with Command Link. Special steps must be taken to do this as follows:

Windows 98

Plug & Play under Windows 98 does not result in SRAM PC cards being properly recognized. The best way to set up your Win 98 PC to use memory cards is to load the 2 *real mode* drivers included with Win 98 as follows:

1. Click *Start* then *Run*, type in **Sysedit** and hit <enter>
2. You will see 5 cascaded windows:



3. Click on the CONFIG.SYS window and type in the following text:

```
device=c:\windows\system\csmapper.sys
device=c:\windows\system\carddrv.exe /slot=n
```
4. For the value of n, type the number of PC card slots on your computer. This is usually 1 or 2.
5. Close the *Configuration Editor* window. You will be prompted to save the changes. Answer yes. Re-start your PC and go to the *Verifying that your PC recognizes the cards properly* section of this chapter.

Windows NT

Windows NT does not have drivers built in to support SRAM memory cards. You must purchase drivers from Systemsoft , M Systems, or other driver suppliers. Visit the www.systemsoft.com for details.

Windows 2000 & XP

Plug & Play under Windows 2000 & XP Professional sometimes results in SRAM PC cards being properly recognized. Simply plug in a SRAM PC card and your PC should recognize it as a removable drive. If it does not, refer to the [Memory Card Driver Installation](#) section of Appendix C.

There are several things “different” about Windows 2000:

- A quirk of the Win 2000 & XP operating system is that the *removable drive* for your cards will only exist in “*My Computer*” WHEN THE CARD IS INSERTED IN THE MACHINE.
- Windows 2000 & XP are very intolerant of removing memory cards (and other PCMCIA devices) without first shutting them down. If you have removed a card without going thru the proper Win 2000 procedure, you have already discovered this. See the section titled “**Set your memory card drive letter in Command Link**” later in this chapter for the proper procedure.

Windows ME

While we do not recommend that you use Windows Millennium (ME), if you are stuck with it, configure your PC as follows:

1. In Windows Explorer, go to the \Drivers\Storage\Flash folder on your Windows ME CD
 2. Right-click the file *Trueffs.inf*, and then click *Install*.
 3. Restart your computer.
- A quirk of the Win ME operating system is that the *removable drive* for you cards will only exist in “*My Computer*” WHEN THE CARD IS INSERTED IN THE MACHINE

Formatting Memory Cards

If you did not purchase your memory card from CDS, or if you suspect that there are problems with the card, you must *Format* it just as you would format a hard or floppy disk prior to using it.

Windows 98 & Windows ME

- Go to the *Start* menu, select *Programs* then *MS DOS Prompt*.
- Type *Format <DRIVE LETTER>: <ENTER>*
 - *DRIVE LETTER* is the designation for your removable drive. See the next section to determine this if you do not know.
 - *ENTER* means ENTER key, not typing E-N-T-E-R
- The PC should format the card and produce a report showing the number of free bytes on the card.

Windows 2000 and Windows XP

- Go to *Start*, select *programs*, then *accessories*, then *command prompt*
- Type *Format <DRIVE LETTER>: /FS:FAT <ENTER>*
 - *DRIVE LETTER* is the designation for your removable drive. See the next section to determine this if you do not know.
 - *ENTER* means ENTER key, not typing E-N-T-E-R
- The PC should format the card and produce a report showing the number of free bytes on the card.

Verifying That Your PC Recognizes the Cards Properly

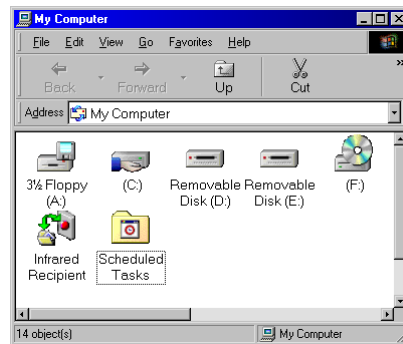
Windows 2000, Windows XP and Windows ME

Insert your memory card into 1 of the slots. Wait until the PC beeps. Follow the instructions below.

- NOTE that with 2000, XP and ME, you will only see 1 removable drive in *My Computer*. It will correspond to the drive (slot) that the card is currently inserted in.
- Another quirk of XP is that the drive letter for the card will only be shown *while the card is in the slot*. When you stop and remove the card the drive letter will disappear.

Look for card drive letter in *My Computer*

Verify that Windows recognizes your PC SRAM card as a removable drive by opening *My Computer* (double click on the icon on your desktop)



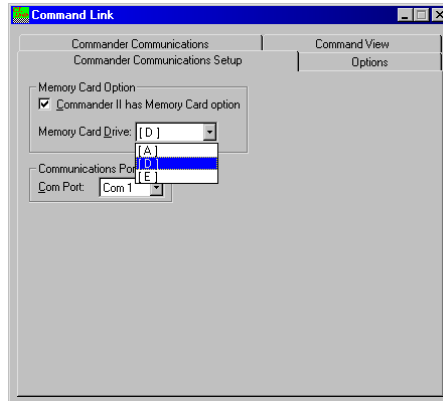
You should have removable drives shown for each of your PC card slots. In this example there are 2 drives, D: and E: (except in XP as noted above)

If you have more than 1 card slot (Drive), determine which letter is assigned to which slot as follows:

1. Insert your memory card into 1 of the slots, wait for the beep to indicate Windows has recognized the card.
2. Right click on one of the drive icons, then left click on *Properties*
3. The *properties* dialog should show a *Capacity* corresponding to the size of the memory card. If it does, then you have found drive letter assigned to the slot that the card currently is in. Make note of it.
4. If it shows a *Capacity* of 0 KB, try the other removable drive(s)

Set Your Memory Card Drive Letter in Command Link

Start *Command Link* by double clicking on its icon. Click on the *Commander Communications* tab.



*Important note: If you are running under Windows XP, 2000 or ME, your memory card **must** be in the slot to do the following steps:*

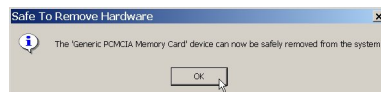
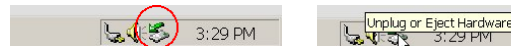
1. Check the *Commander II has memory card option* box.
2. Pull down the *Memory Card Drive:* list and select the drive letter determined in step 3 of the previous section.
3. Close Command Link

Removing Memory Cards When Running Windows 2000 & XP

IMPORTANT NOTE:

When running Windows 2000 & XP, it is very important that you follow this procedure when removing your memory card. When you wish to remove the card from the PC:

1. Point at the “Eject Hardware” icon on your task bar:
2. Single click on it and you will see:
3. Single click on the message and you will see:



4. Click OK and then remove the memory card.
 1. If you forget to perform this procedure you will receive a warning from Windows 2000, and the next time you insert the card Command Link will not recognize it. If this happens, simply eject the card properly and re-insert it and then CL will recognize it.

IF YOU FAIL TO DO THE ABOVE STEP YOU MUST RE-BOOT YOUR PC. BE SURE TO THANK BILL GATES FOR THIS

Memory Card Driver installation for Windows 2000 & XP

If your memory card is not working (no removable drive shown in “my computer” when the card is inserted), then follow these instructions.

VERY IMPORTANT! Verify that you are using a CDS supplied memory card. There are many SRAM memory cards on the market that simply do not work **and can not be made to work** under Windows 2000 and XP.

NOTE FOR XP USERS ONLY: First verify that you have XP service pack 1 or higher installed on your PC. See issue# PC-1 (Above).

Driver installation Procedure

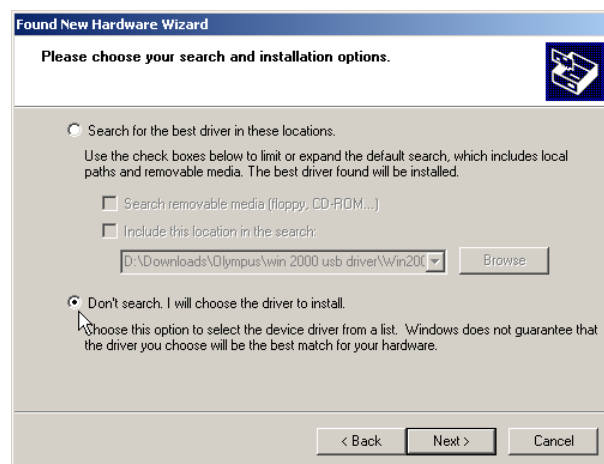
Insert Card in PC

- 1) When you first insert a memory card in the PC the Windows 2000 hardware setup process begins when the “Found New Hardware Wizard” starts. If the wizard does not start, go to the instructions below to **Update Driver for Card**.



- 2) In the first screen of the Wizard, click the button to *Install from a list or specific location*.

Then click *Next*.

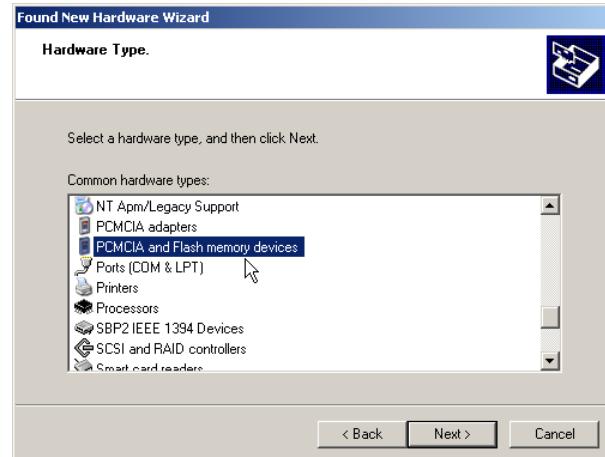


- 3) Now you should see the *Search Options* dialog box. Click the *Don't search, I will choose driver to install* button.

Then click *Next*.

- 4) Now you should see the *Hardware type* dialog box. Click on *PCMCIA and Flash memory devices*.

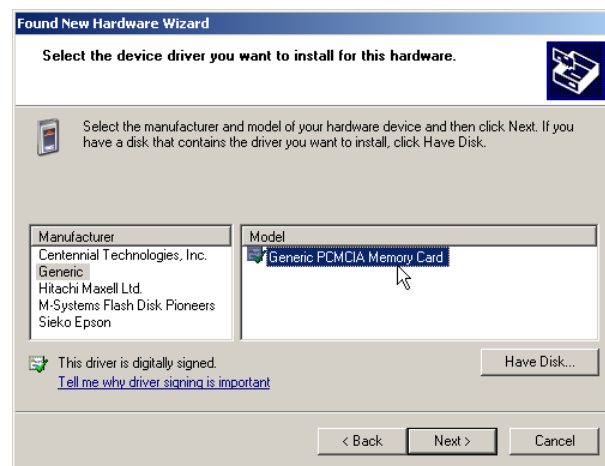
Then click *Next*.



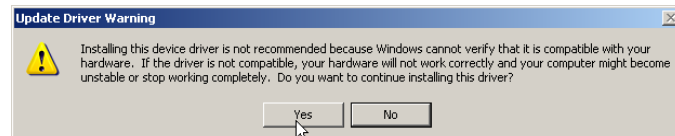
- 5) Now you should see the *Select Device driver* dialog box. On the left side click *Generic*, then on the right side click *Generic PCMCIA Memory Card*.

NOTE: if there is a *Show Compatible hardware* check box in the dialog. Un-check the option.

Then click *Next*.



NOTE: You might receive a *Update Driver warning*. If you do, click *Yes*.



- 6) Click *Finish* to complete the installation. Click *YES* when you are asked to re-start windows. After windows re-starts your PC should recognize the memory card as a removable drive. (see [Verifying That Your PC Recognizes the Cards Properly](#) in chapter 1 of this manual.) If your PC still does not recognize the card, refer to the **Update Driver** section below.

If you still have problems, verify that you are using a CDS supplied memory card. There are many SRAM memory cards on the market that simply do not work and can not be made to work under Windows 2000 and XP. If you have an old card or one not supplied by CDS, contact CDS to purchase a compatible card.

VERY IMPORTANT NOTE: in windows XP and 2000 you must “Stop” the memory card before removing it from the machine. See the section [“Removing Memory Cards When Running Windows 2000 & XP”](#) in chapter 1.

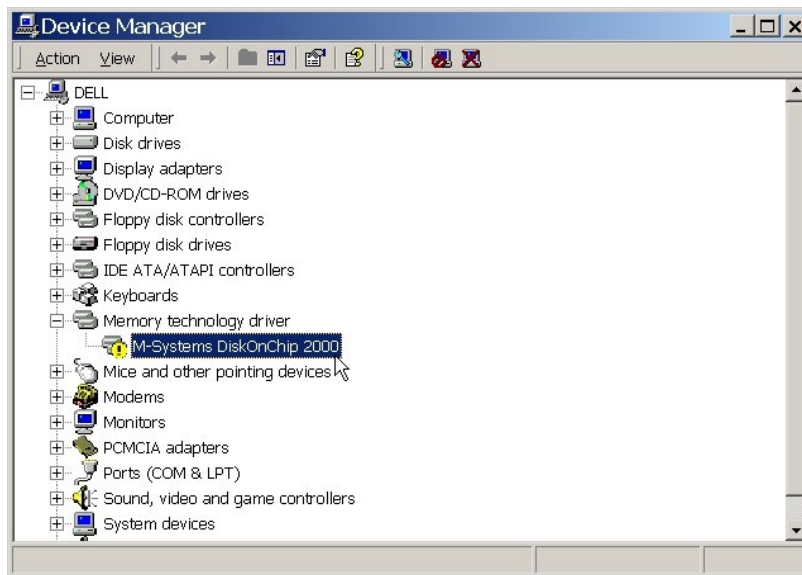
Update Driver for Card

if you have already inserted a memory card (before reading these instructions) and another driver has been installed for it you will not see the Wizard when you insert the card in your PC, but you probably will see a message that the card is not working properly.

Update the driver for the card as follows:

Insert Card in PC

- 1) Right-click on the *My Computer* icon on your desktop. Then left click on *Properties*.
- 2) Click the *Hardware* tab, then click *Device Manager*. You will see a list of devices installed on your computer.



- 3) Find the device in the list that is not working, as indicated by the yellow “!” next to it. It will usually be listed under *Memory Technology driver* or under *PCMCIA and Flash memory devices*.
- 4) Left-click on the device then click the *Action* menu at the top and select *Update Driver*.

Now go to step 2 in the Driver Installation Procedure section (above)