

Chapter 21 Transferring settings and data to another PC

In this chapter you will learn how to move all software settings and data from 1 computer to another

Introduction

In order to transfer your complete Track Master, Command Link and Command View environment from 1 PC to another, several items must be moved. They are:

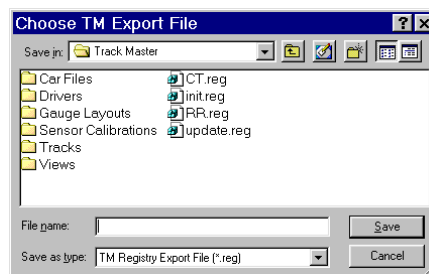
- Track Master program settings such as default signal properties etc.
- Recorded data files
- Track Master *View* files
- Command Link *Car* files
- Command View *Layout* files

Moving Track Master Program Settings

Exporting Track Master Settings

Start Track Master on the first (source) PC. Go to the *System* menu, and select *Export Track Master Settings*.

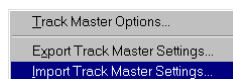
As default, all of your program settings will be checked. If for some reason you do not want certain settings transferred to the new machine, uncheck those boxes now. Click OK.



Next you will see this dialog box. Pull down the *save in* list and navigate to your floppy disk drive. Give the settings file a name and Click OK. Your program settings are now exported and saved.

Importing Track Master settings

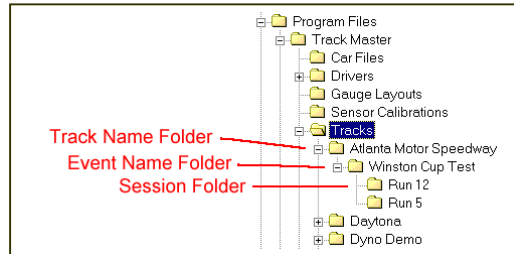
Start Track Master on your new PC. Go to the *System* menu, select *Import Track Master Settings*.



Navigate to your floppy disk drive. The file you created in the previous step should be listed. Open it. Your program settings are now installed on your new machine. You must close Track Master and restart for the settings to take effect.

Copying *Data Files*

Data files for each session or run are stored in a separate folder for each session or run. These session folders are stored in a data structure of folders that includes the *track name* folder, the *event name* folder, and the *session* folder. This structure must be maintained when moving data from 1 pc to another.



Maintain data structure

The easiest way to move the data is to connect the 2 PCs on a network, and use Windows Explorer to move each entire *track name* folder from 1 PC to the other. In some cases you can use your floppy disk drive to move the folders and files, but in many cases the standard 1.44 megabyte floppy will be too small to move even a single session of data.

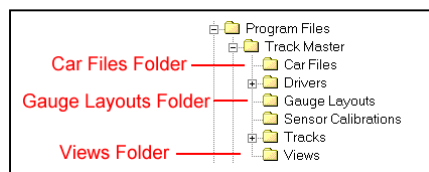
In these 2 cases, you would simply copy each entire TRACK folder from 1 machine to another, and all the EVENT and SESSION folders (under the TRACK folder) would be copied too.

Another way to move the data is to first compress it using a program such as *Winzip*. IF you use *Winzip*, make sure that Winzip is set to both RE-CURSE FOLDERS and SAVE FOLDER NAME INFORMATION. This method is a little more complicated and requires good working knowledge of Winzip.

One more method of moving the data is to use programs that enable connection of 2 computers via serial or parallel cable, such as *Laplink*.

(Please note that CDS does not provide technical support or training in the use of Windows Explorer, Laplink, Winzip, or other 3rd party programs)

Copying *View and Template Files*



View files contain all the information Track Master needs to create all the plot pages in the view, AND the information on which data was last saved with the *view*. THE VIEW FILES DO NOT CONTAIN THE ACTUAL DATA. This is why if you simply copy view files from 1 machine to another and try to load the view, you will get many error messages telling you that Track Master can not find certain data.

View and *template* files are saved in the *Views* folder. Copy all the files from the *Views* folder on the first PC to the same folder on the second PC. These files are fairly small and can usually all fit on 1 floppy disk.

Copying *Car Files*

Car Files contain all the information a Commander II needs to record data, including all sensor calibrations etc. *Car Files* are saved in the *Car Files* folder. Copy all the files from the *Car Files* folder on the first PC to the same folder on the second PC. These files are fairly small and can usually all fit on 1 floppy disk.

Copying Command View *Layout Files*

The Command View *Layout* files contain all the information the *Command View* program needs to duplicate screen layouts you may have created or modified. They are saved in the *Gauge Layouts* folder. Copy all the files from the *Gauge Layouts* folder on the first PC to the same folder on the second PC. These files are fairly small and can usually all fit on 1 floppy disk.

Summary

If after moving all items per the above steps you get error messages saying Track Master can not find certain data, the most likely cause is you did not EXACTLY duplicate the folder structure when moving the data. Note which data the program says it cannot find, and use *Windows Explorer* to examine and verify the folder structure.

Important Note Regarding Write-able CDs

If you use a writ-able CD to move data, all the files will have their READ ONLY attribute set when you write them to the CD, and this attribute must be cleared before TM can use the files.

If you do not zip up the data files prior to storing on CD, then you must manually clear this attribute on each individual file. Therefore, if using a CD, we HIGHLY recommend zipping the data first, and copying the ZIP file to the CD. Then, when you un-zip the data on the new PC, all the original file attributes will be preserved.