

Competition Data's Co Pilot 2 Systems for:

Spec Racer[®]Ford
GEN3



Download



**Option
Inputs**

Standard Inputs



CP 2000G3 Standard Package Includes:

- Co Pilot 2 display logger with configurable LCD display, shift, alarm, and warning lights.
- Displays lap time, predicted lap, session management info, engine data, all alarms, gear, brake bias (requires brake pressure sensors) and more. See separate brochure or web site for full capabilities of the Co Pilot 2.
- 8 Analog, 3 RPM, 9 ECU input channels (expandable)
- 8 Meg Memory holds up to 8 sessions

Standard Inputs:

- GPS-2 Antenna & Controller for speed & Lap Time
- Lateral & Longitudinal G
- Steering sensor (for handling)
- Battery Voltage

ECU Data from the GEN 3 Engine Controller:

(2 wires carry all this data—no extra sensors required)

- Engine RPM
- Throttle
- Oil, Water, & Intake Air Temperature
- Fuel, Oil, and Intake Manifold Pressure
- Lambda (air-fuel ratio)

Also Included:

- Complete custom made plug together harness using all teflon jacket cables and waterproof connectors.
- Track Master Software Std. version includes handling analysis.
- 2 Years of software upgrades included.

CP 2000G3 Standard Package Price: \$3150

CP 2500G3 Deluxe Package Includes:

Everything that is in the CP 2000G3 Package PLUS:

- 4 Suspension / Shock Travel
- Track Master Software Pro version includes chassis, shock, and handling analysis.

CP 2500G3 Package Price: \$4950

Popular Options:

• Wheel speed(s)	125
• Brake Pressures kit (front & rear)	530
• Brake Rotor Temperature (ea)	340
• Tire Temperatures (ea)	340
• Vertical G	150
• Yaw Rate	325
• Add 8 analog input channels	700
• Add 15 analog and 2 RPM channels	1900
• Suspension Sensors - see CP 2500 package (above)	

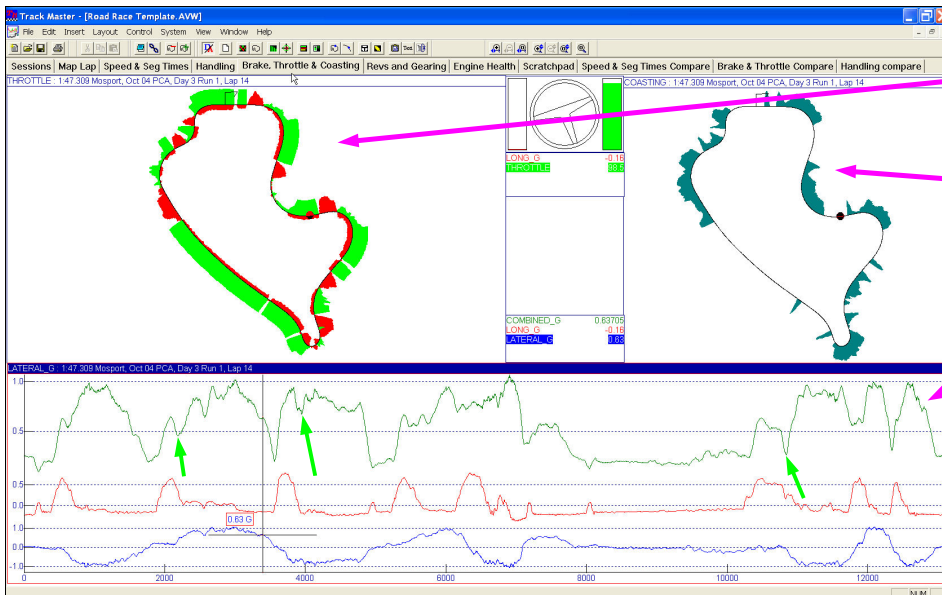
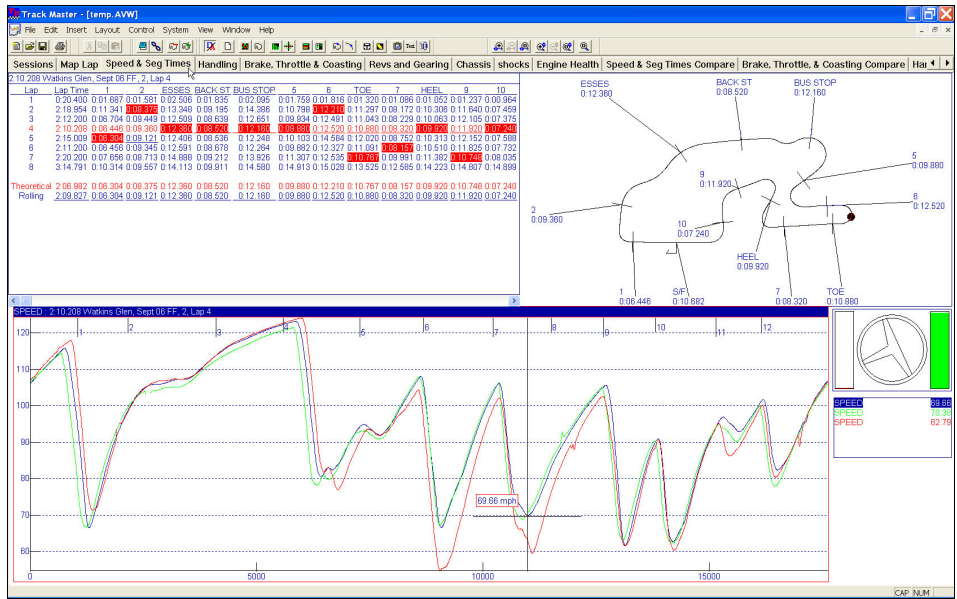
Note: Some of the above options when combined together may require the 8 analog or the 15 analog, 2 RPM channel upgrade.

See our web site for other options and more information

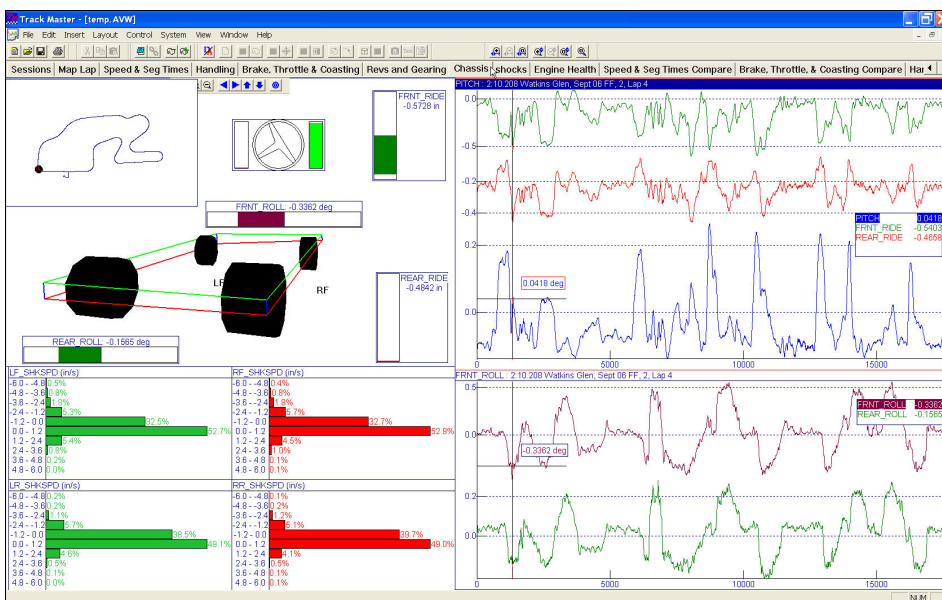
Competition Data's Track Master Data Analysis Software

Track Master Software enables fast and easy analysis of your data. Graphic features that help you to visualize the data include:

- Track Map with data overlay
- Animated Driver Controls (steering wheel, brake and throttle bar graphs)
- Many screens or "pages" are all loaded at the same time. The user simply clicks the tab for a page to switch to it. Each page contains several plots or other "objects" neatly arranged to analyze a particular aspect of your performance.
- The SEGMENT TIMES report is used as a tool to navigate to the best examples of a segment of the track you are analyzing. If you only examine the fastest couple of laps, you may miss the best example of a critical segment!
- Segments can be named such as "ESSES" or "BUS STOP" rather than simply "seg 1, seg2". Etc.
- The pages are "linked together so that when you update 1, they all update. The cursor movement is also linked from plot to plot and page to page.
- Many pre-programmed pages are included with the software, so that you can start analyzing right away without have to do a lot of "setup"



- This map plot shows *throttle* (in green) and *longitudinal G* in red. When *longitudinal G* is on the outside of the track it indicates braking, where it is on the inside it indicates forward acceleration. This plot makes it easy to see where the driver is having problems getting on the power.
- One of Track Master's automatic calculations is *coasting*, which measures the degree to which the driver is neither on the throttle or on the brakes. A value of 0 indicates maximum braking or 100% throttle. Here is *coasting* plotted on the map along with map markers indicating average coasting in important segments. As you adjust your car and work on your driving, you seek to minimize coasting.
- *Combined G* is a calculated signal used primarily to detect areas where you can brake deeper or later. It is essentially the radius of the friction circle at any point on the track. Dips in the *combined G* after braking and before full *lateral G* indicate locations where you are not using the maximum grip available as you enter the turn.
- This graph shows *lateral G* (blue), *longitudinal g* (red), and *combined G* (green). The green arrows indicate dips that you would try to "fill in" by braking later.



The CP 30000 package includes suspension sensors which enables you to analyze all aspects of how your chassis is working. Some of the suspension analysis features of *Track Master* are:

- "Moving Plane" animation of the chassis movement showing the change from "static" position.
 - Histograms (typically for shock speeds)
- Raw suspension data is automatically converted in to practical information by built-in "math channels". These include:
- All 4 shock speeds, wheel movements
 - Front and rear ride height
 - Front and rear roll angle, Pitch angle

